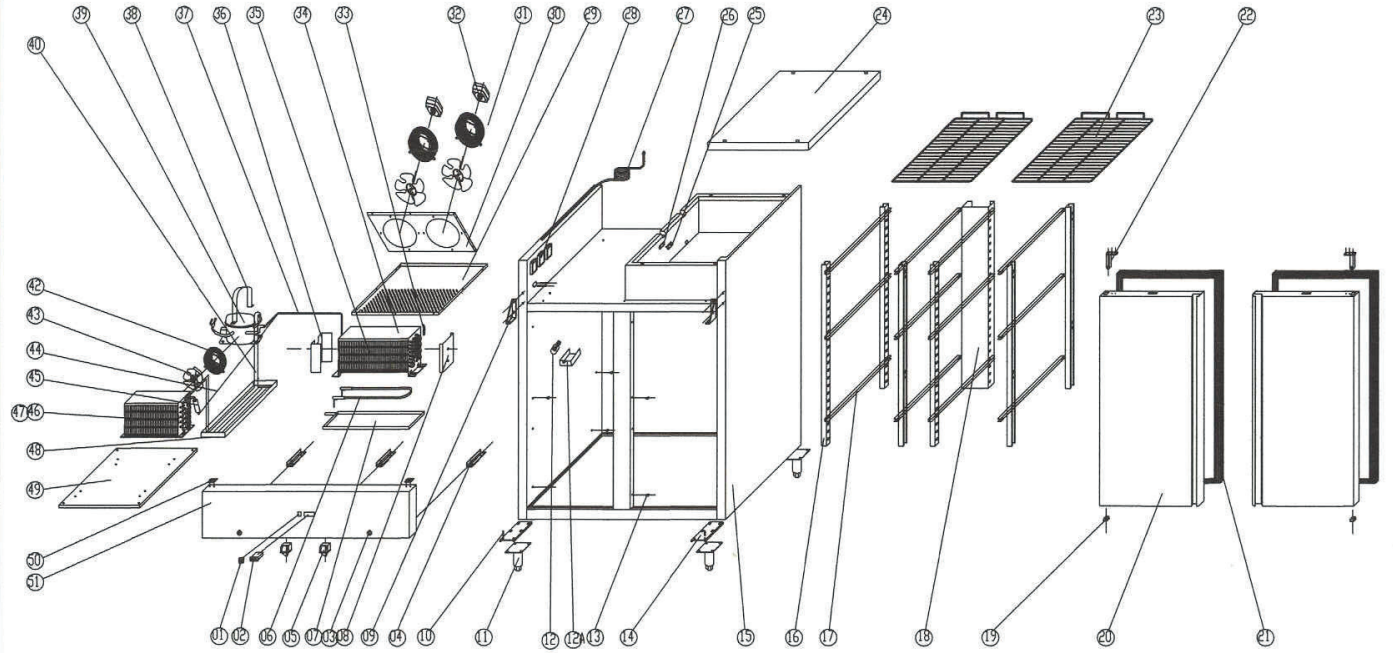


MF 1300
2020_08



MF 1300
2020_08

| Pozice | Kód | Název |
|--------|-------------|-------------------------------|
| 1 | S900.01 | MAIN SWITCH |
| 2 | GN650BT.16 | THERMOSTAT |
| 3 | GN650TN.86 | LOCK |
| 4 | GN650TN.43 | FRONT PANEL FIXED CLIP |
| 5 | GN650TN.48 | DOOR SWITCH |
| 6 | GN1410BT.01 | DEFROST HEATING ELEMENT |
| 7 | GN1410TN.02 | EVAPORATOR WATER PAN |
| 8 | GN650BT.03 | EVAPORATOR BACK GUIDE |
| 9 | GN650TN.15 | UP HINGE/RIGHT/LEFT |
| 10 | S900.06 | DOWN HINGE AXIS |
| 11 | GN650TN.07 | FEET |
| 12 | GN650TN.02 | LAMP |
| 12A | GN650TN.03 | LAMP COVER |
| 13 | GN650TN.01 | SUPPORT LOCATED NUT |
| 14 | GN650TN.05 | DOWN HINGE |
| 15 | GN1410BT.10 | BODY |
| 16 | GN650TN.50 | SUPPORT |
| 17 | GN650TN.35 | GUIDE/LEFT |
| 18 | GN1410TN.04 | BACK MIDDLE SUPPORT |
| 19 | GN650TN.10 | DOWN HINGE AXIS JACKET |
| 20 | GN650TN.11 | DOOR |
| 21 | GN650TN.13 | GASKET |
| 22 | GN650TN.14 | DOOR SPRING |
| 23 | GN650TN.08 | SHELF |
| 24 | GN1410TN.05 | TOP |
| 25 | S900.31 | SENSOR FIXED CLIP |
| 26 | GN650TN.17 | PROBE PADDING |
| 27 | S900.47 | PLUG |
| 28 | GN650TN.16 | JUNCTION BOX |
| 29 | GN1410TN.06 | AIRFLOW DUCT BOARD |
| 30 | GN1410TN.07 | FAN SUPPORT |
| 31 | GN650TN.23 | WALL RING |
| 32 | GN650BT.11 | EVAPORATOR FAN |
| 33 | GN650BT.04 | PROTECTOR FOR HEATING ELEMENT |
| 34 | GN1410TN.08 | EVAPORATOR COVER |
| 35 | GN1410BT.08 | EVAPORATOR |
| 36 | GN650BT.07 | EVAPORATOR FRONT GUIDE |
| 37 | GN1410BT.02 | SUCTION TUBE |

